



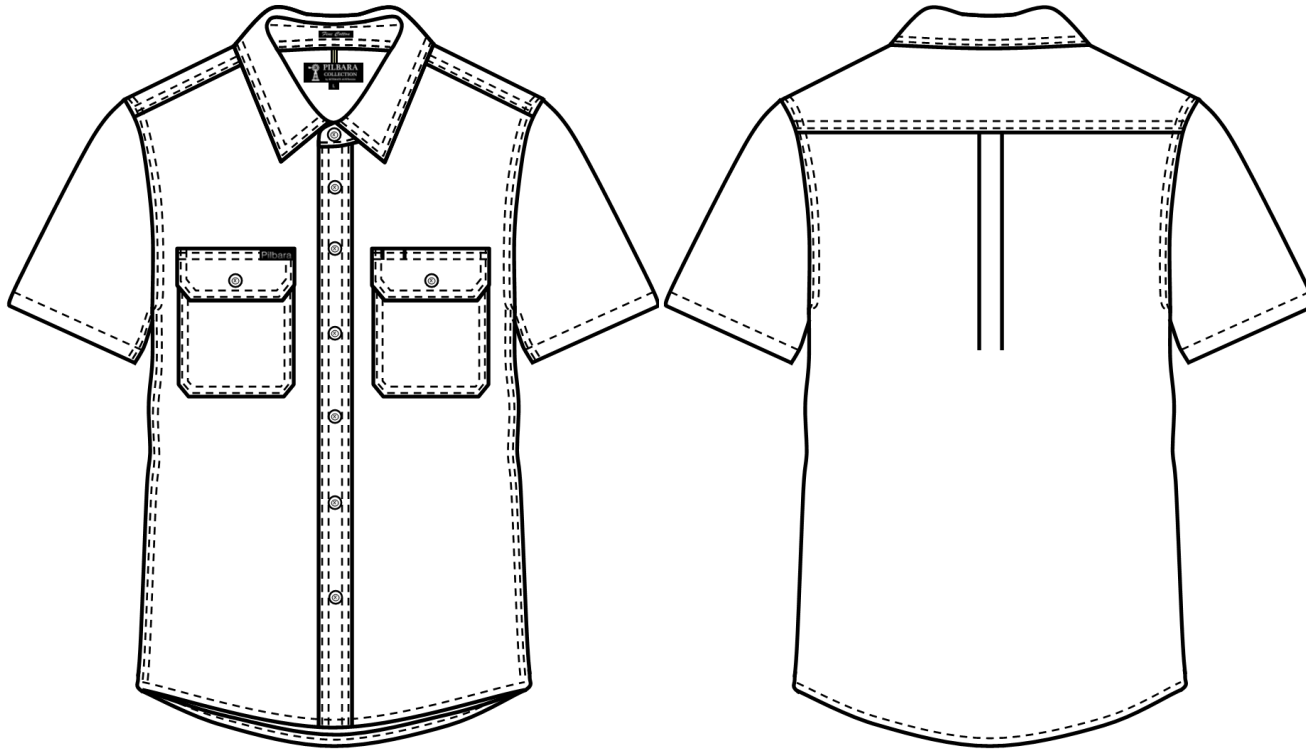
**PILBARA
COLLECTION**
by RITEMATE AUSTRALIA

RMX

Pilbara Collection Shirts

RMPC007S Mens Chambray Classic Fit, Long Sleeve

COMMERCIAL IN CONFIDENCE



Features

- Premium Quality Mercerized, Double pre-shrunk, 100% Cotton Chambray
- Classic Fit Styling
- Front Flap Dual Pocket
- Tortoiseshell Button

Fabric:

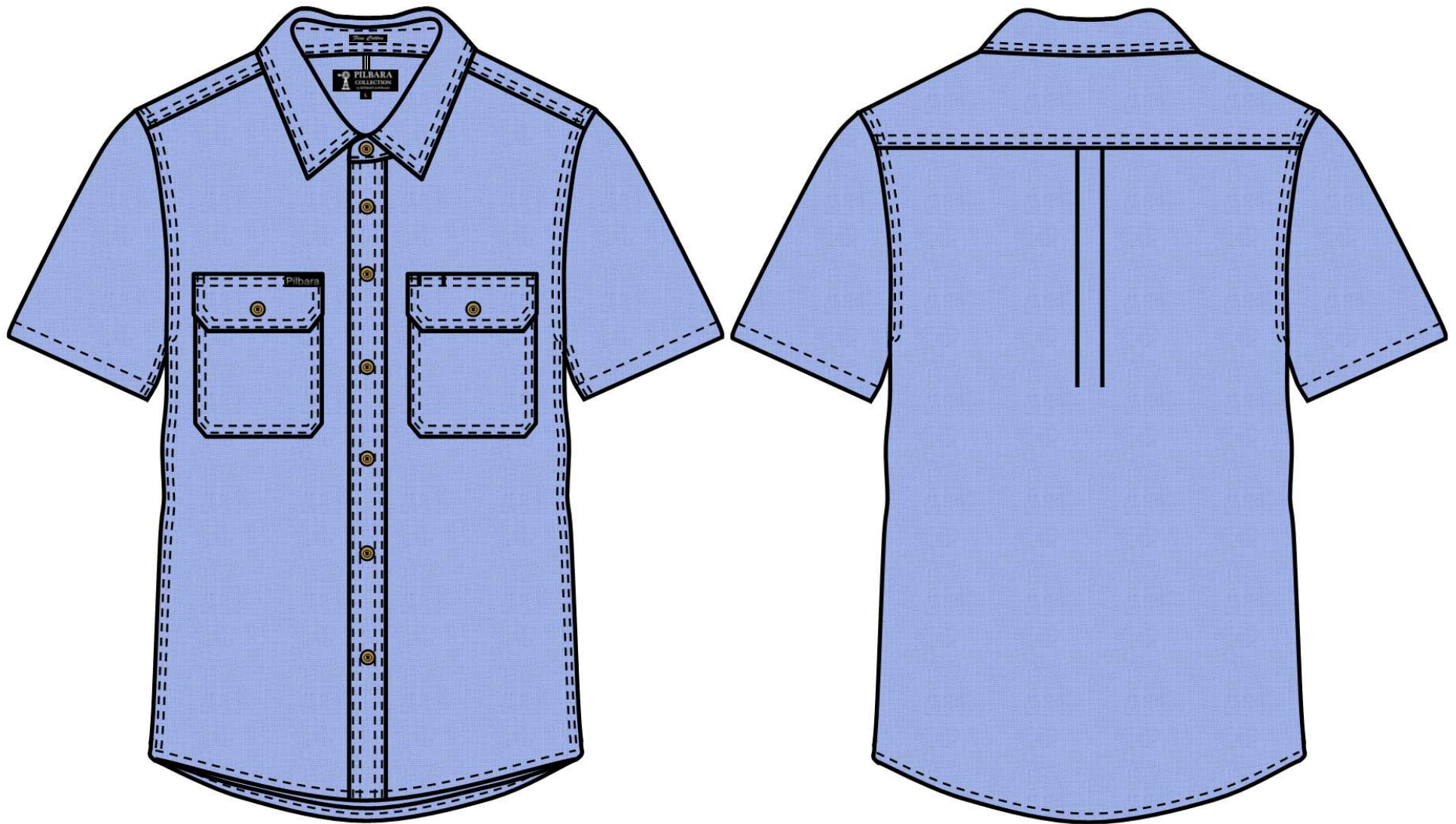
Crafted from 100% High Count, Easy Care, Fine Cotton, 135gsm, Chambray Y/D Blue

Colour: Chambray Blue

Size Range XS – 5XL

Fabric Quality

Dimension Stability		+/-3%
Colour Fastness to Washing	Colour Change	4
	Colour Staining	4-5
Colour Fastness to Rubbing	Dry	3-4
	Wet	2-3
Tearing Strength	Warp	>=10 min N
	Weft	>=7 min N



Measurement Table

Major Points	XS	S	M	L	XL	2XL	3XL	4XL	5XL			
1/2 Chest	49	52	55	59	63	67	71	75	78			
Centre Back Length	80	81	82	83	85	87	89	91	93			
Sleeve Length	24	24	25	26	28	30	32	33	34			
Shoulder Width	42	44	46	49	52	55	58	61	63			
Pocket Dimension	Width 14 x Depth 15.5cm											

